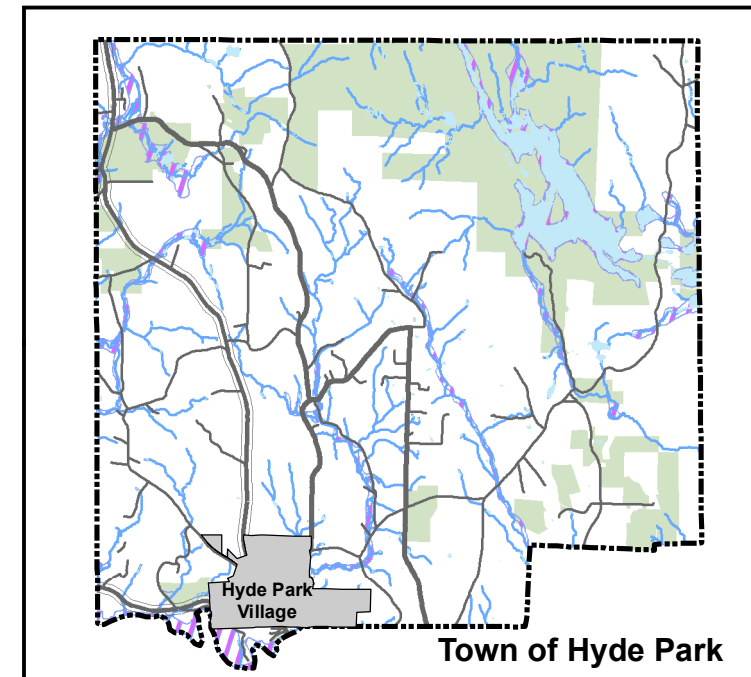
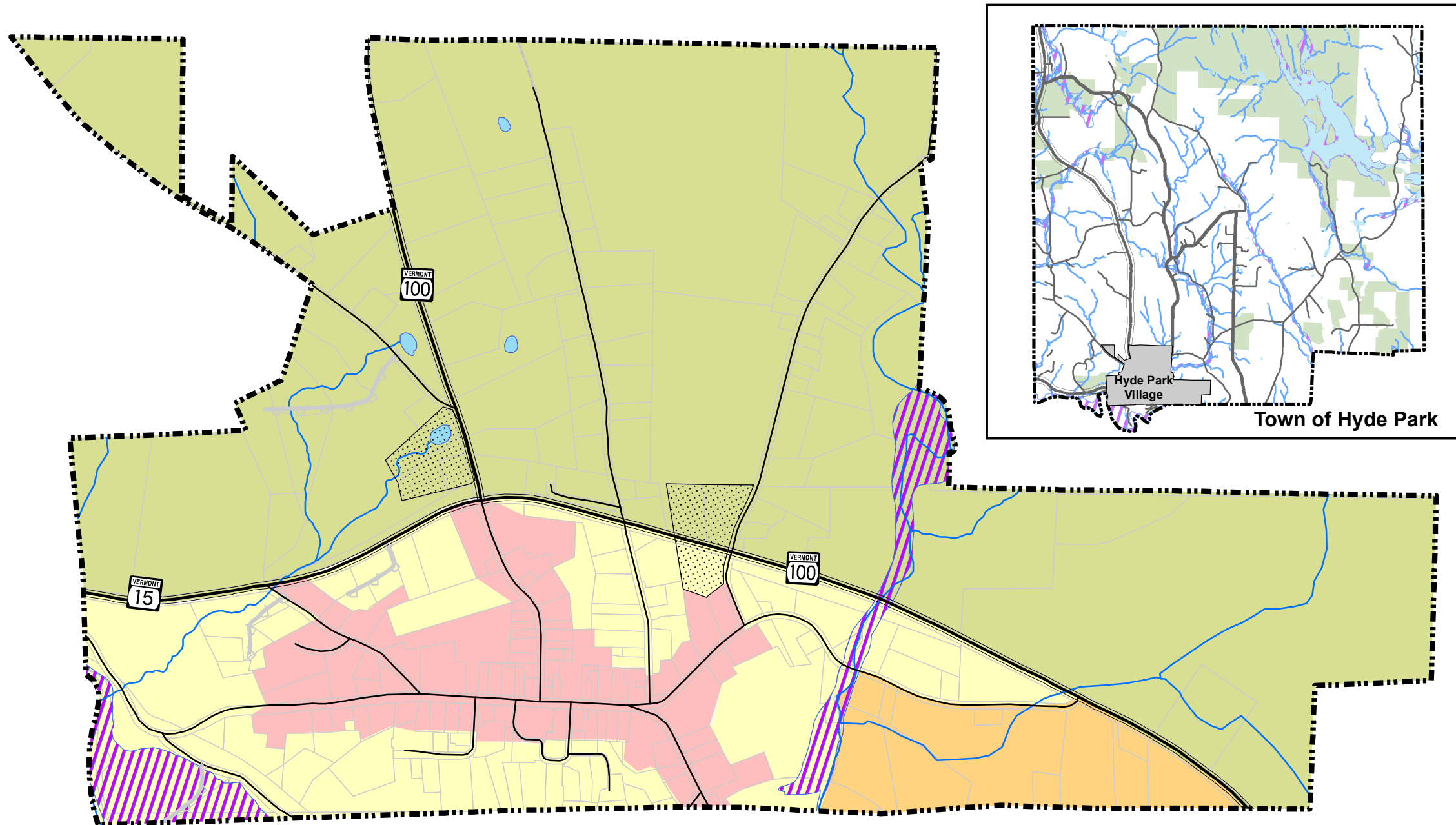


Village of Hyde Park 2015 Zoning Districts

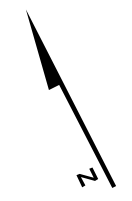
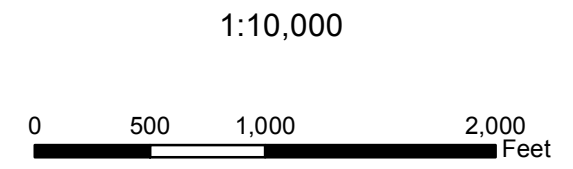


- Zoning Districts**
- Village Gateway Commercial
 - Village Residential
 - Village Gateway Rural
 - Village Center
 - Service Area Overlay
 - 100 Year Floodplain
 - Lake/Pond
 - River/Stream
 - Parcel Boundary
 - Village Boundary

DATA SOURCES:

ZONING DISTRICTS: Town of Hyde Park, 2015.
 POLITICAL BOUNDARIES: VCGI, 2010.
 ROADS: E911 Road centerlines from 1:5,000 orthophotos and GPS, VCGI, 2014.
 SURFACE WATER: Vermont Hydrography Dataset digitized from 1:5000 orthophotos, VCGI, 2010.
 FLOOD PLAIN: Digitized from FEMA Flood Insurance Rate Maps, LCPC, 1983. Floodplains for planning purposes only. Refer to the VANR-DEC, Water Quality Division, Floodplain Coordinator for official floodplain determinations. (802) 241-3759.
 PARCEL BOUNDARIES: Town of Hyde Park, 2014.

Lamoille County Planning Commission
 P.O. Box 1637, 52 Portland Street
 Morrisville, VT 05661
 802-888-4548 f: 802-888-6938
 www.lpcvt.org Updated 4/2015



**NAD 1983
VT State Plane, Meters
Traverse Mercator**

**For planning purposes only.
Not for regulatory interpretation.**